



Long Term Care Survey Process Workshop

Sponsored by Medline



July 25, 2018

Registration begins at 8:00 a.m.

Training scheduled for 9:00 a.m. – 3:30 p.m.

Crowne Plaza Little Rock, 201 S. Shackleford Rd., Little Rock, AR 72211

Cost – \$99 for Members, Lunch & Materials Included

New Survey?

No Problem: Overview of the LTCSP

Presenter: Tracy Cooley, VP Training, Providigm

As if navigating the changes and additions in the Final Rule weren't enough, skilled nursing providers must also adapt to dramatic changes in their survey process this year. The Long Term Care Survey Process is a resident-centered, outcome-oriented inspection that relies on a case-mix stratified sample of residents to gather information about the facility's compliance with participation requirements.

This new process, often referred to as the Hybrid Survey, has providers scrambling how to successfully navigate their health inspection. In this session, we will detail the Hybrid survey process used by state surveyors, and review strategies that will enable providers succeed.

This lecture will also provide attendees with strategies and practices that not only help providers to improve survey performance, but also can be used to fulfill requirements to meet the Five Elements of QAPI. Combining these initiatives will help providers to come into compliance more efficiently, and more completely, with less time, effort, and energy required from staff.

Objectives:

- Become familiar with the new Hybrid Survey, and be able to identify what is happening at each point of their inspection.
- Identify and utilize interview and observation techniques that proactively prepare them for initial pool activities.
- Successfully utilize Critical Element Pathways to identify gaps in performance and correct opportunities.
- Understand that QAPI and survey readiness are not mutually exclusive- the same process can be used to prepare for both requirements.

Goodbye Grace Period:

What will be expected from your Facility Assessment and QAPI in the Coming Year

Presenter: Ellen Kuebrich, Chief Strategy Officer, Providigm

With over 500 changes to existing regulations, and 19 brand new requirements to comply with, the Final Rule hit the long-term care industry hard. CMS heard concerns regarding the scope and timing of the new requirements for Phase 2 and provided a limited time restriction of enforcement remedies like CMPs, payment denial, or termination for Phase 2 requirements, including the Facility Assessment.

This lecture will explore how your facility will be affected when this enforcement relief ends. What will be expected in your Facility Assessment moving forward? How do you make documents like the Facility Assessment and your QAPI plan meaningful in Quality Improvement? What can we expect in terms of deficiencies and penalties in 2019?

Objectives:

- Become familiar what will happen on and after November 28, 2018, as relief from CMS ends.
- Understand the intent and expectation behind the facility assessment and QAPI.
- Become aware of the repercussions of having an insufficient facility assessment as it pertains to other related Ftags.
- Implement strategies to make QAPI and the Facility Assessment meaningful and actionable in their facility(ies).

For more information, please contact the Association at 501-374-4422 or registration@arhealthcare.com.

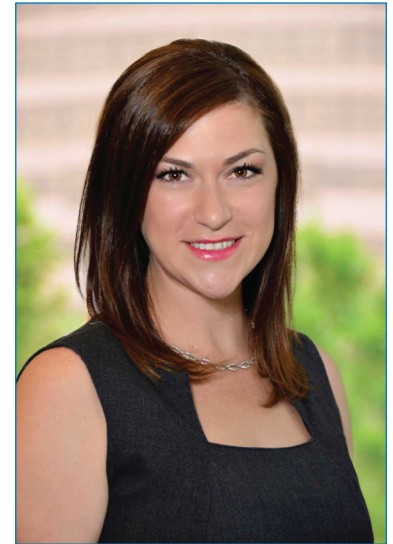
5.5 CEUs are pending approval from OLTC

Meet Our Presenters



Tracy Cooley, VP Training, Providigm

As a registered nurse, Tracy has held numerous positions within long-term care including: director of nursing, assistant director of nursing, restorative nurse, assessment coordinator, and staff nurse. Tracy served as a registered nurse health care surveyor with the Ohio Department of Health for five years and became a Registered QIS Surveyor in February 2006. While at the Ohio Department of Health, she conducted numerous surveys and functioned as a supervisor of a survey team. In 2009, Tracy became a Master Trainer with Providigm, working with the state survey agencies in the implementation of the survey process.



Ellen Kuebrich, Chief Strategy Officer, Providigm

Like you, Ellen has seen the healthcare industry change more dramatically in the last 10 years than it has in the last 50. With over 12 years of expertise in advising government-regulated medical industries, including the medical device, tissue transplant, biologic, pharmaceutical and long-term care industries, she is able to help acute and post-acute clients to improve clinical outcomes and increase revenue. Ellen received her Bachelor of Science from the University of Colorado.

Providigm creates practical solutions that health care providers can use to improve quality in their facilities. Through Providigm's training and web-based systems, providers are able to improve the quality of care and life of their residents.

Providigm's patented abaqis® Quality Management System is a proven quality management system advancing beyond survey readiness with solutions for QAPI, customer satisfaction, predictive risk of readmission, and risk-adjusted readmission reporting. By improving survey performance, managing QAPI, enhancing customer satisfaction, and reducing readmissions, abaqis supports marketing to referral partners to increase census.



